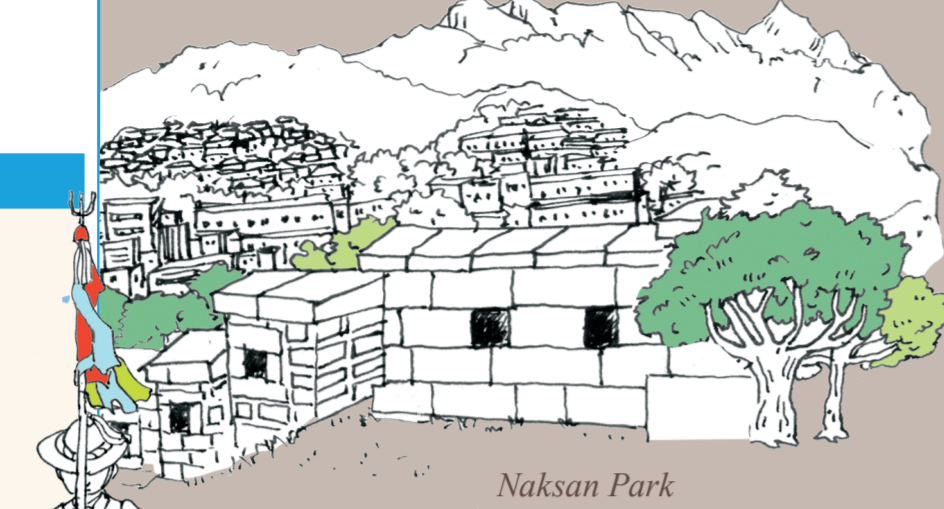
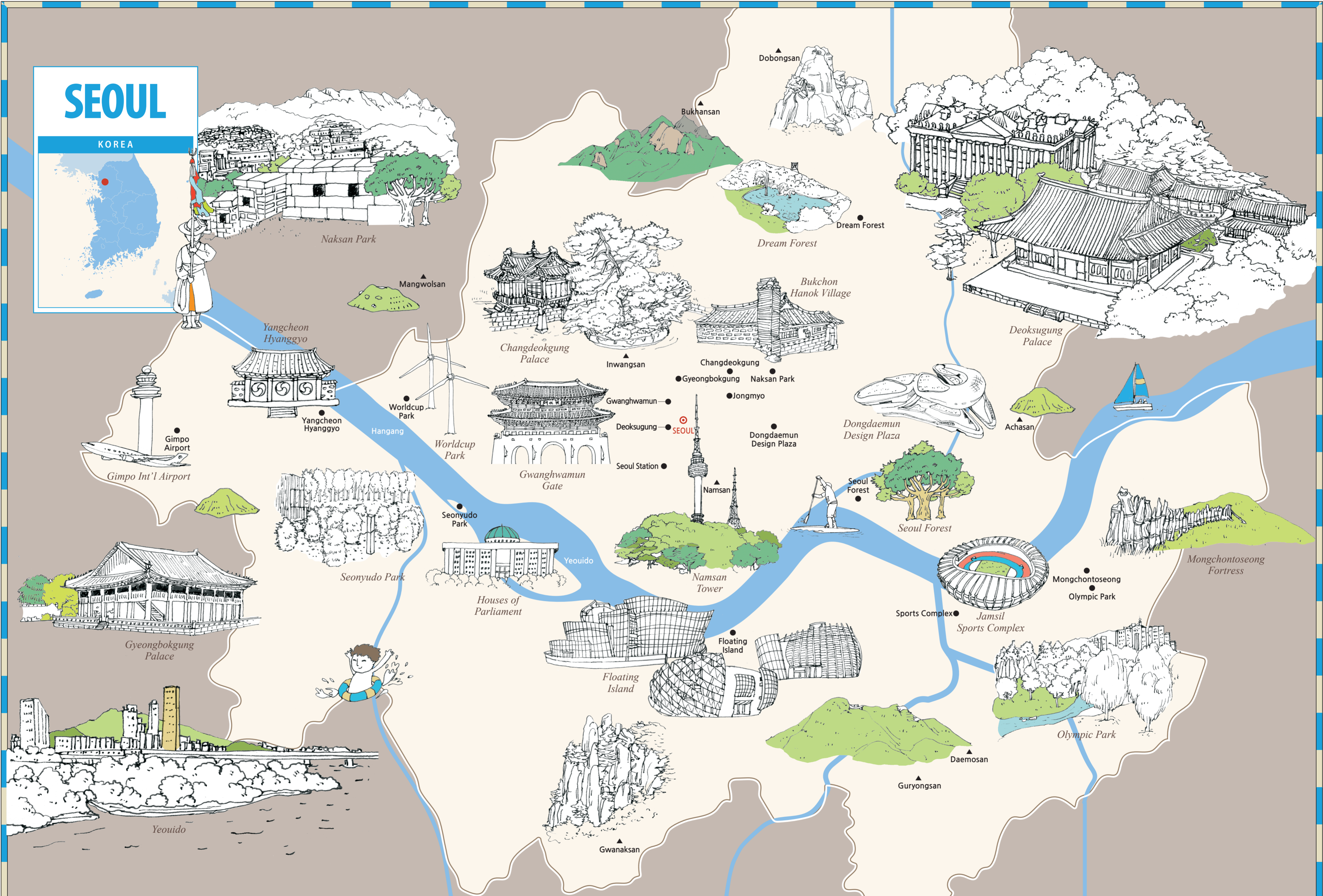
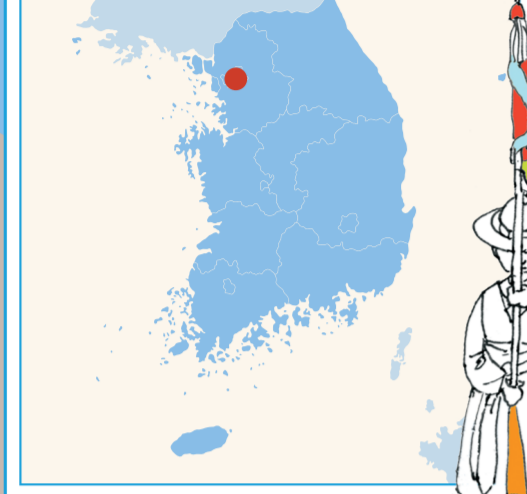


# SEOUL

KOREA



Naksan Park



Yangcheon Hyanggyo



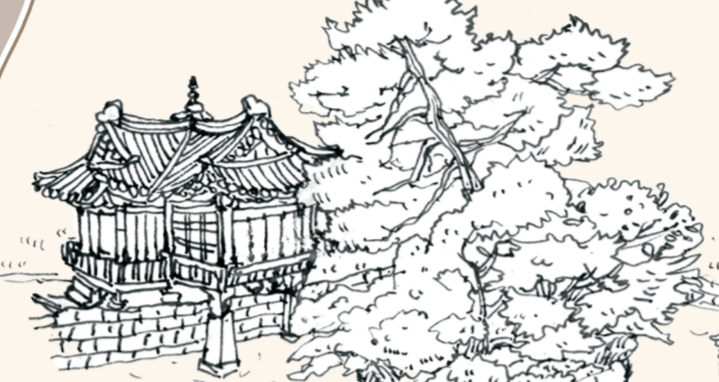
Yangcheon Hyanggyo



Gimpo Airport

Gimpo Int'l Airport

Mangwolsan



Changdeokgung Palace

Inwangsan



Bukhansan



Dream Forest

Changdeokgung

Gyeongbokgung

Naksan Park

Jongmyo

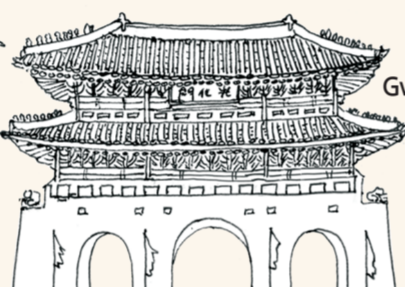
Gwanghwamun

Deoksugung

SEOUL

Dongdaemun Design Plaza

Seoul Station

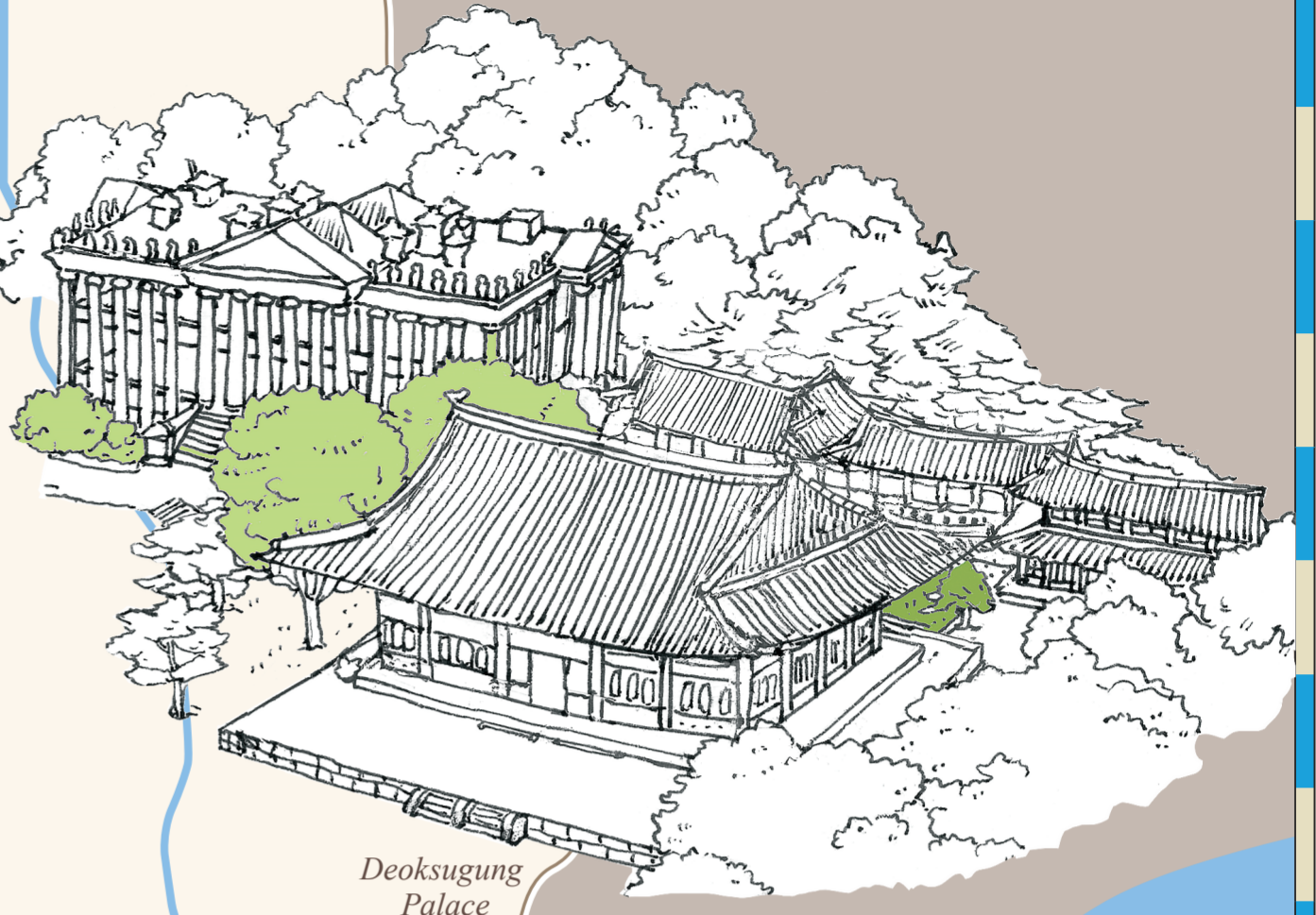


Gwanghwamun Gate



Dongdaemun Design Plaza

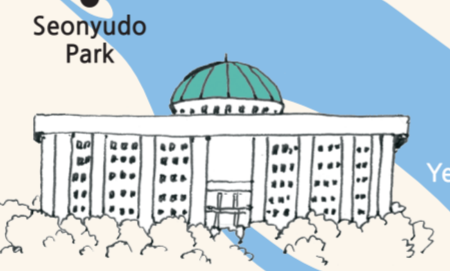
Deoksugung Palace



Achasan



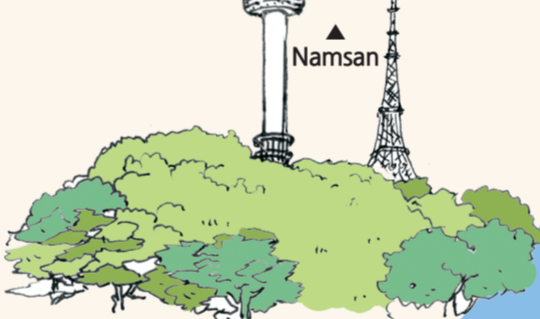
Seonyudo Park



Houses of Parliament

Seonyudo Park

Yeouido

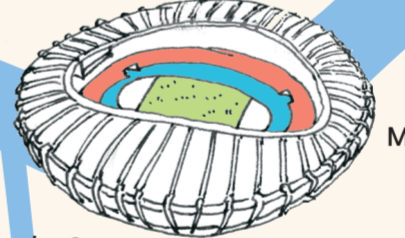


Namsan Tower

Seoul Forest



Seoul Forest



Sports Complex

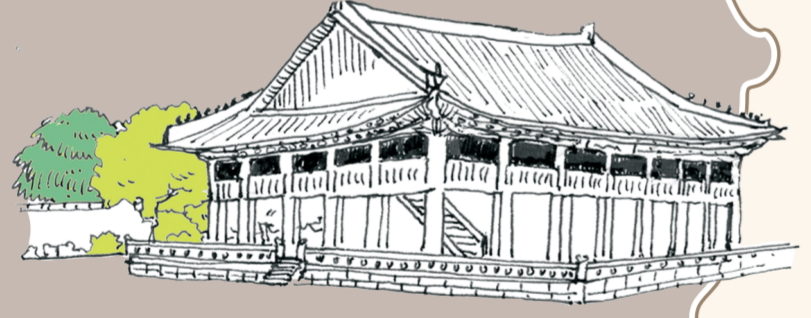
Jamsil Sports Complex

Mongchontoseong

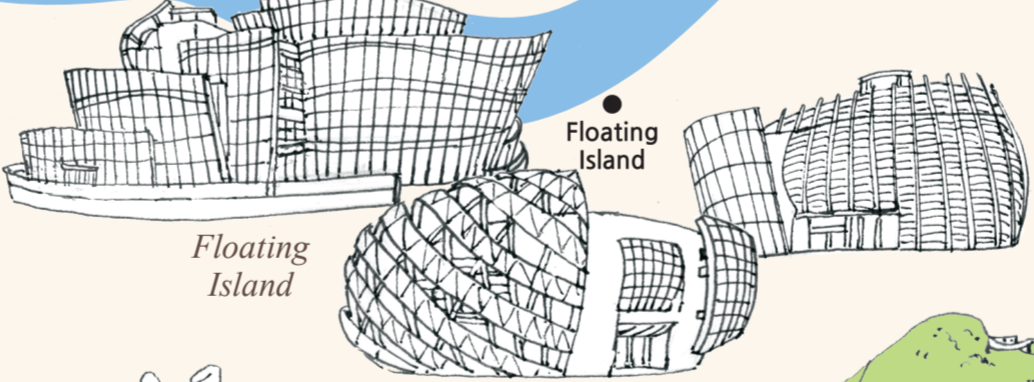
Olympic Park



Mongchontoseong Fortress



Gyeongbokgung Palace



Floating Island

Sports Complex

Jamsil Sports Complex



Olympic Park



Yeouido



Gwanaksan

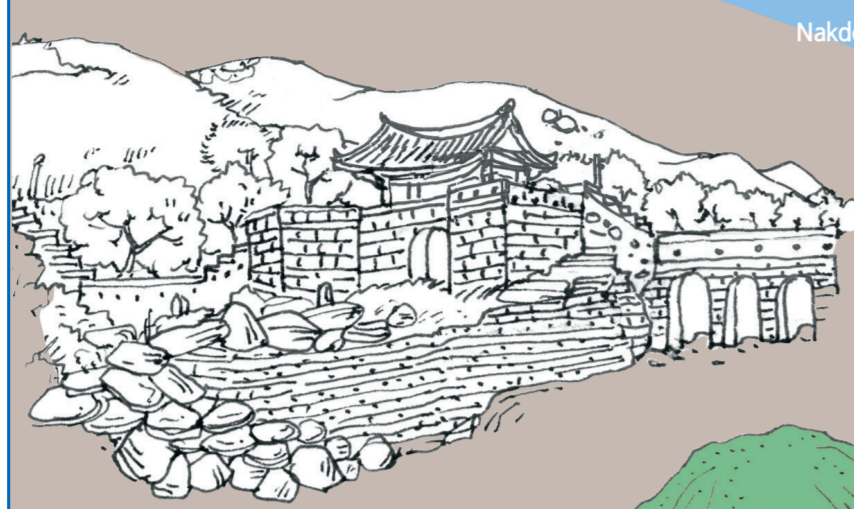
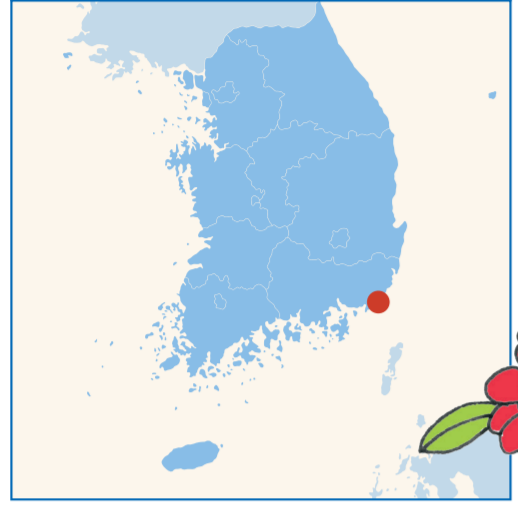


Guryongsan

Daemosan

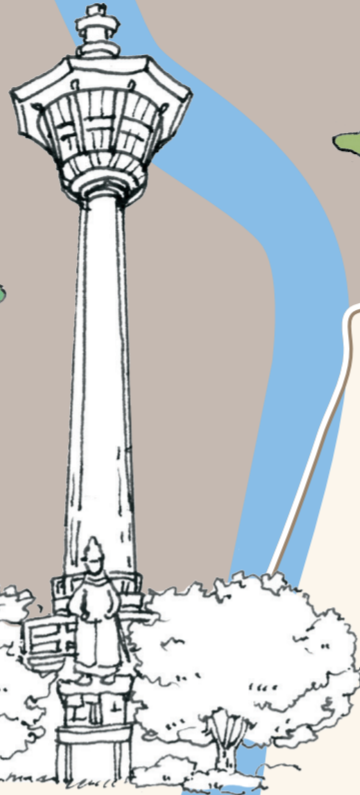
# BUSAN

KOREA



Geumjeongsanseong Fortress

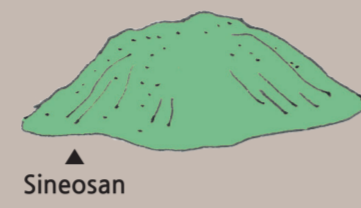
Nakdonggang



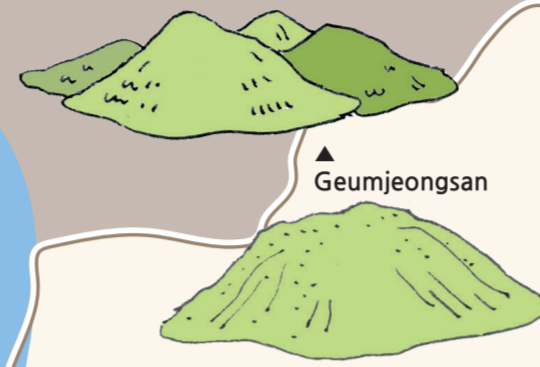
Busan Tower



Gamcheon Culture Village



Sineosan



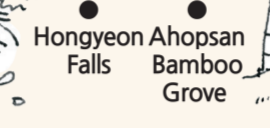
Geumjeongsan

Geumjeongsanseong



Baegunsan

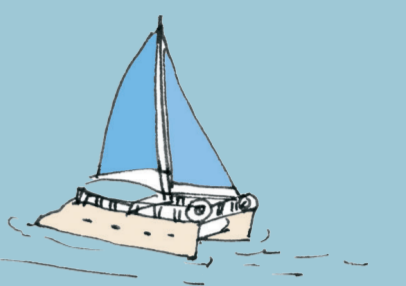
Hongyeon Falls



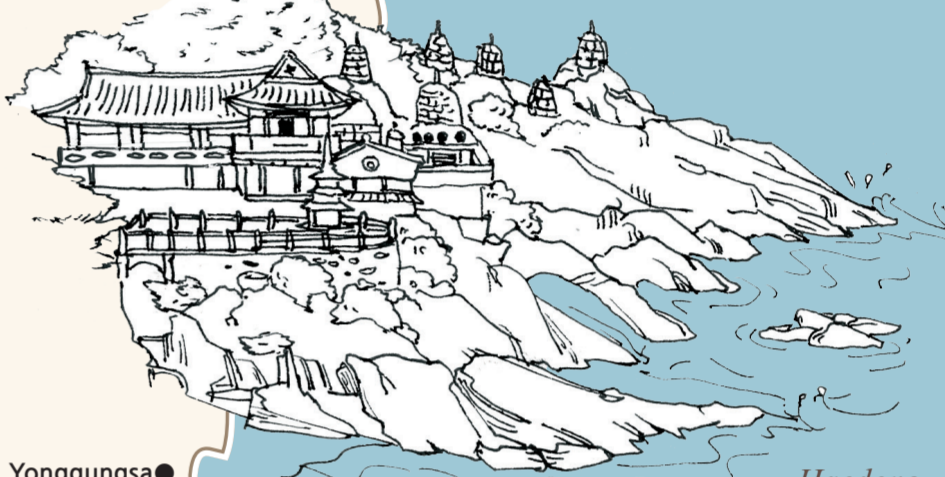
Hongyeon Ahopsan Falls

Bamboo Grove

Ahopsan Bamboo Grove



Yonggungsa

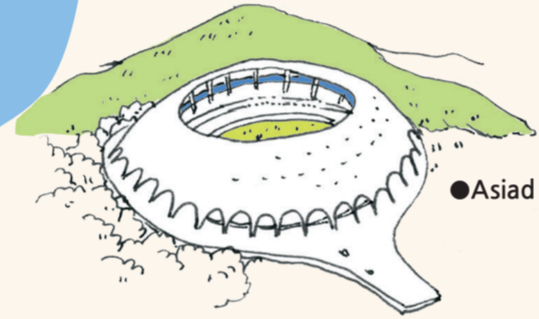


Haedong Yonggungsa

Gimhae Int'l Airport



Gimhae Airport



Asiad Stadium

BUSAN

Nurimaru APEC House



Aquarium



Busan Aquarium



Fish cake

Taejongdae



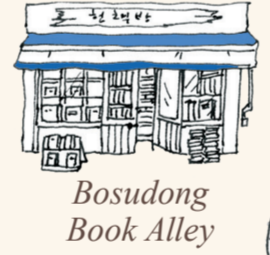
Bonghwasan



Nakdong Esuary Eco Center

Eulsukdo

Eco Center



Bosudong Book Alley



Chinatown

Busan Station

Busan Station

Cruise Terminal

Busan Harbor



Busan Harbor

Gwangnri

Nurimaru

Haeundae



Jagalchi



Dongmaesan

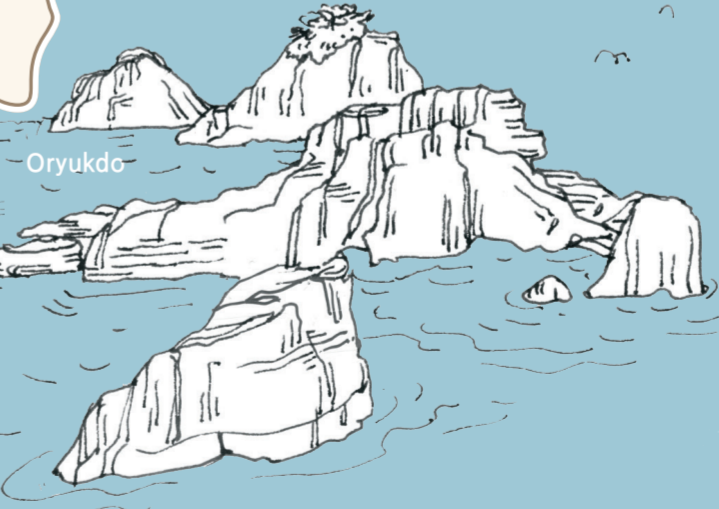


Bongraesan

Yeongdo

Taejongdae

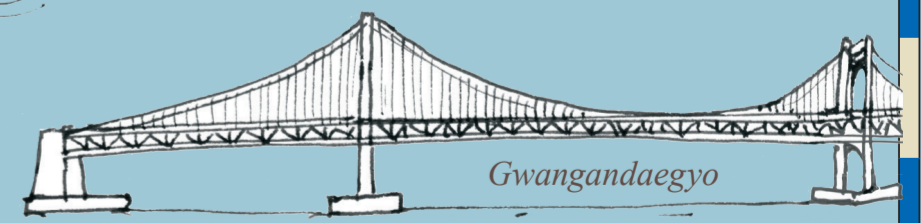
Songdo



Oryukdo

Oryukdo

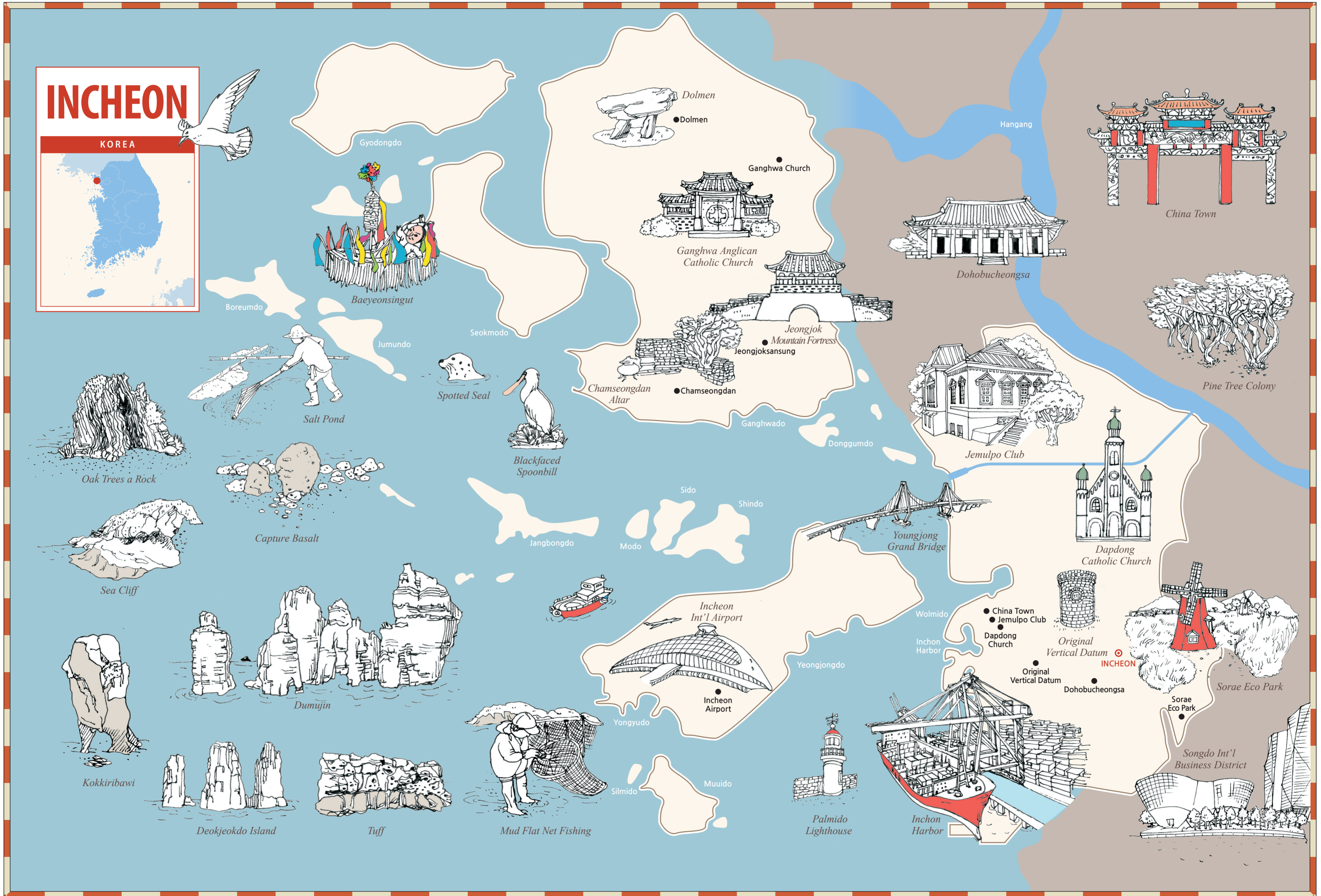
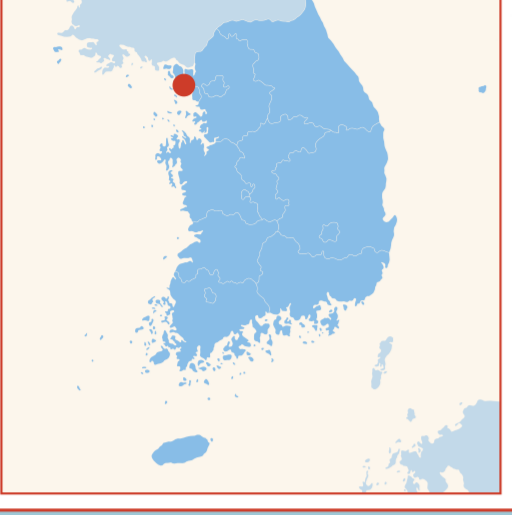
Gadeokdo



Gwangandaegyo

# INCHEON

KOREA



Gyodongdo



Dolmen  
● Dolmen

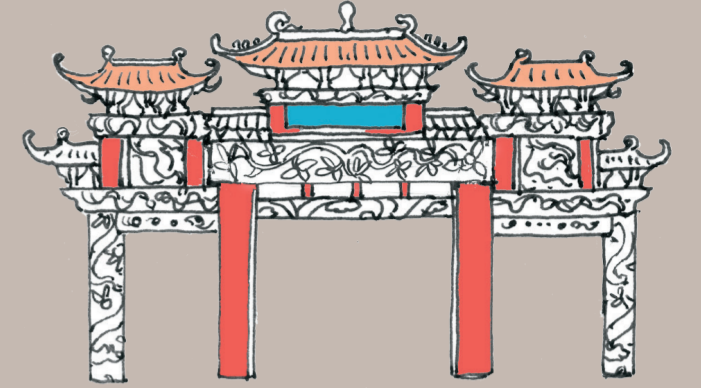
Ganghwa Church



Ganghwa Anglican  
Catholic Church



Dohobucheongsa



China Town

Boreumdo

Baeyeonsingut



Jumundo

Seokmodo



Spotted Seal



Blackfaced  
Spoonbill

Chamseongdan  
Altar

● Chamseongdan

Jeongjok  
Mountain Fortress

Jeongjoksansung

Ganghwado

Donggumdo



Jemulpo Club



Pine Tree Colony

Oak Trees a Rock

Salt Pond

Capture Basalt

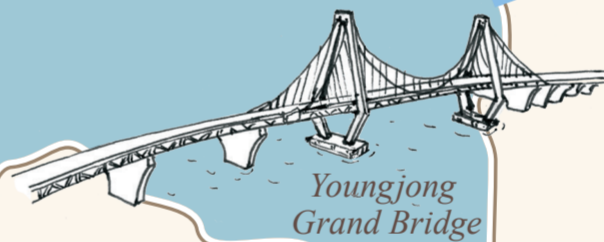
Sea Cliff

Sido

Shindo

Jangbongdo

Modo



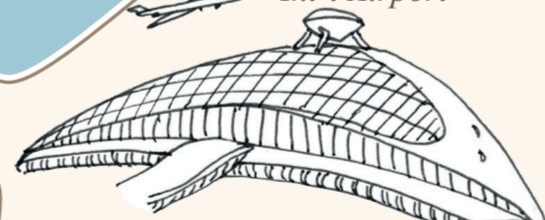
Youngjong  
Grand Bridge



Dapdong  
Catholic Church



Incheon  
Int'l Airport



Incheon  
Airport

Wolmido

Inchon  
Harbor

● China Town

● Jemulpo Club

● Dapdong  
Church



Original  
Vertical Datum

● Original  
Vertical Datum

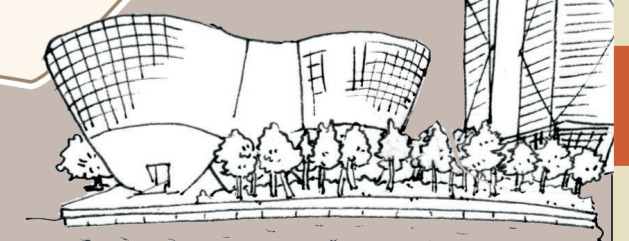
● Dohobucheongsa



Sorae Eco Park

● Sorae  
Eco Park

Songdo Int'l  
Business District



Kokkiribawi



Deokjeokdo Island



Tuff



Mud Flat Net Fishing

Yongyudo

Silmido

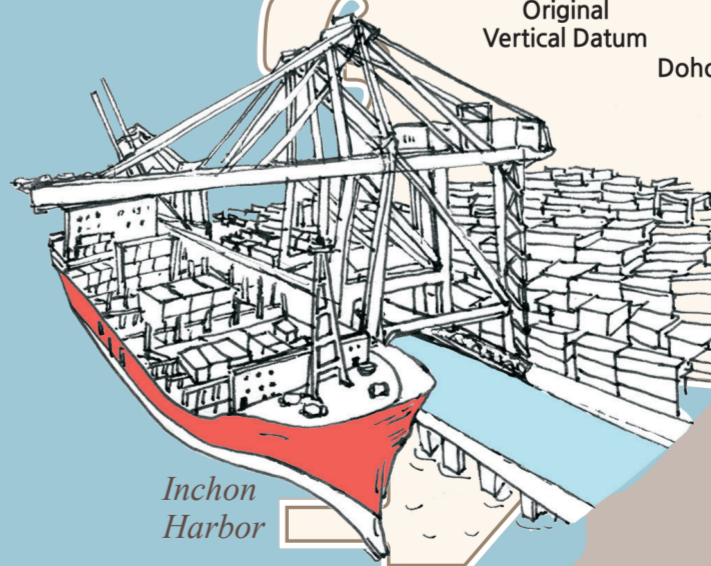
Muuido



Palmido  
Lighthouse

Wolmido

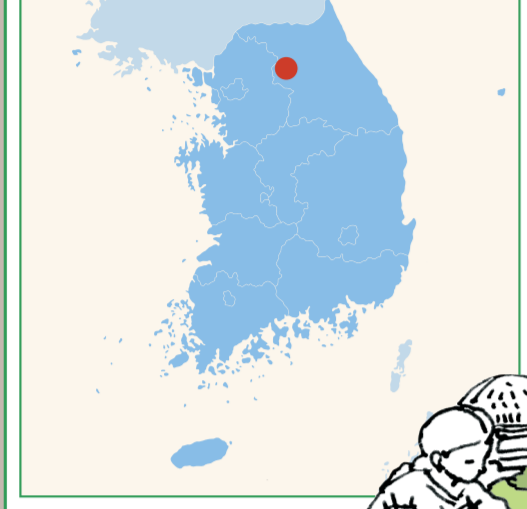
Inchon  
Harbor



Incheon  
Harbor

# CHUNCHEON

KOREA



Kim Yujeong Literature Village



Mongdeoksan

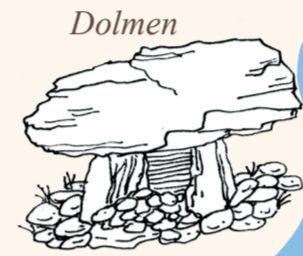


Animation Museum



Cheongpyeongsa

Guseong Falls  
Cheongpyeongsa



Dolmen

Dolmen

Bonghwasan



Soyangho

Soyangho



Hoarfrost on the tree



Guseong Falls



Gugok Falls

Cultural sites of Jungdo

Animation Museum

Botanic Garden

Hyeolgeoyuji

Bongui Fortress

Jungdo

Gongjicheon

CHUNCHEON

Chuncheon Museum

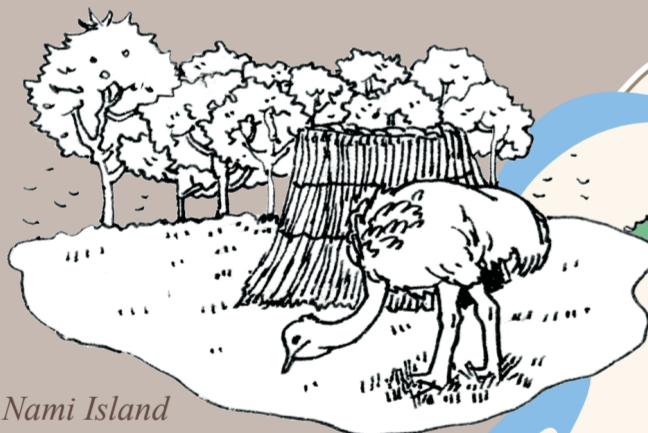


Hyeolgeoyuji site of cave dwelling

Gubongsan

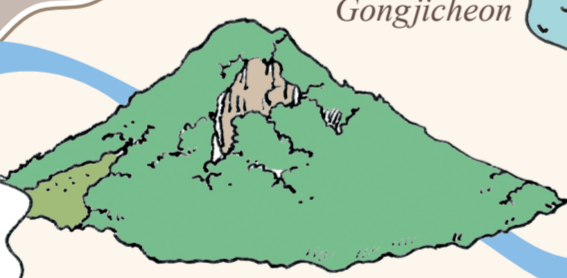
Kwon Jinkyu Museum

Kwon Jinkyu Museum



Nami Island

Nami Island



Geombongsan

Suspension Bridge

Chuncheon Nat'l Museum

Book and Printing Museum

Kim Yujeong Literature Village



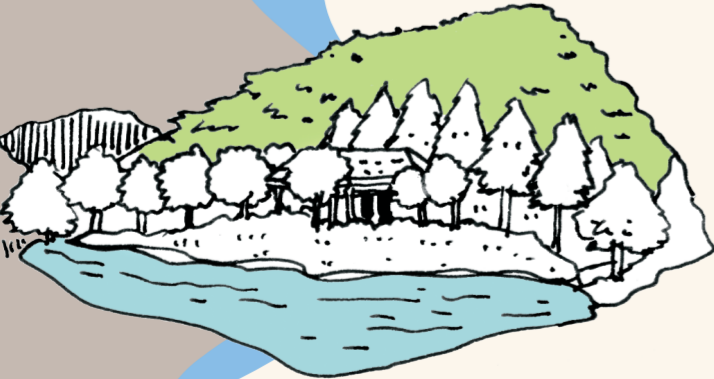
Suspension Bridge

Munbae Village

Gugok Falls

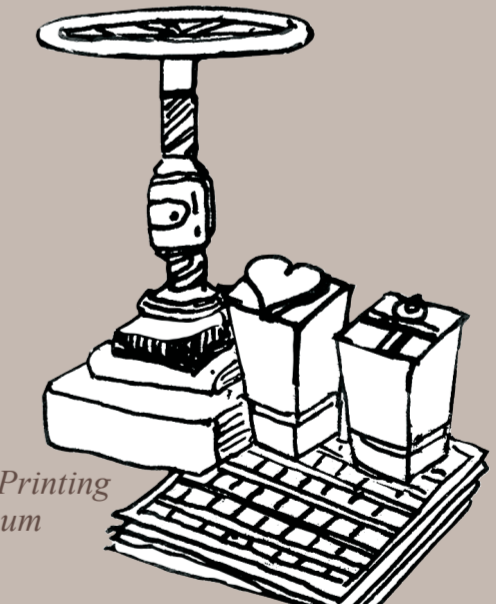
Bonghwasan

Munbae Village



Bongui Fortress

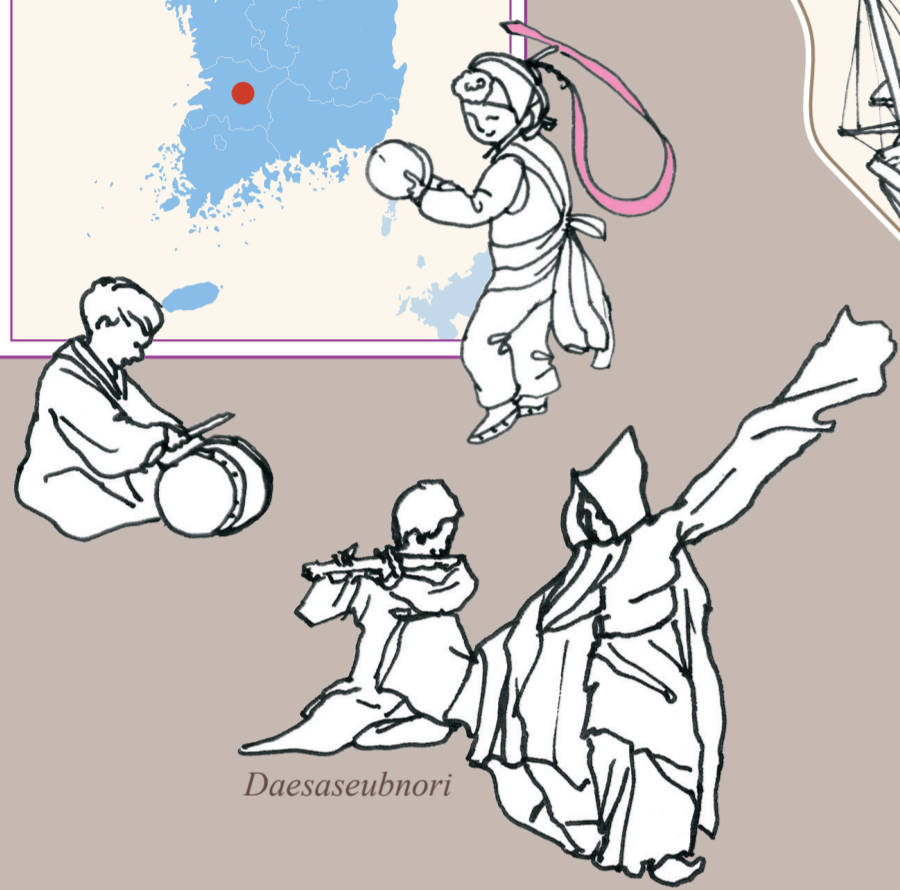
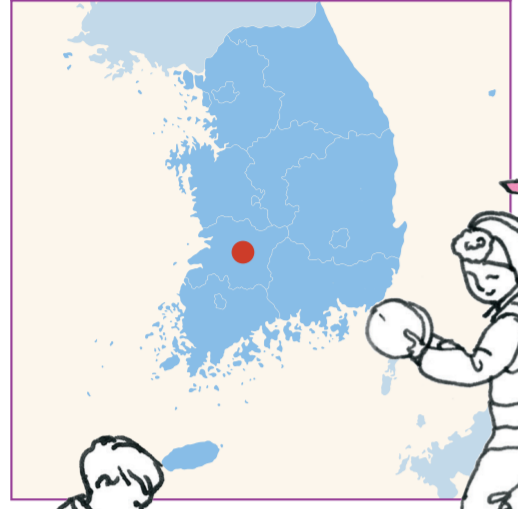
Book and Printing Museum



Gangwon Provincial Botanic Garden

# JEONJU

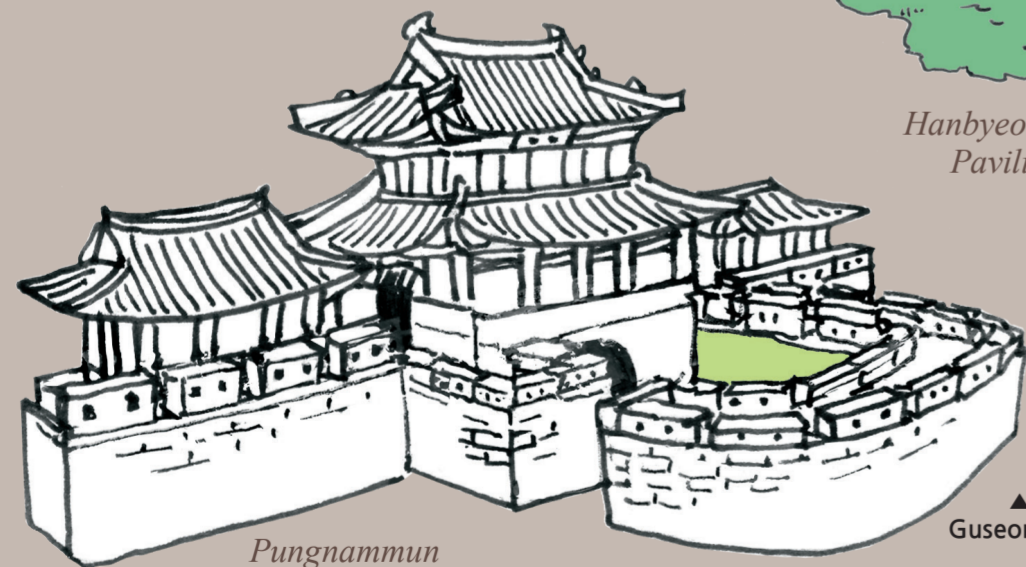
KOREA



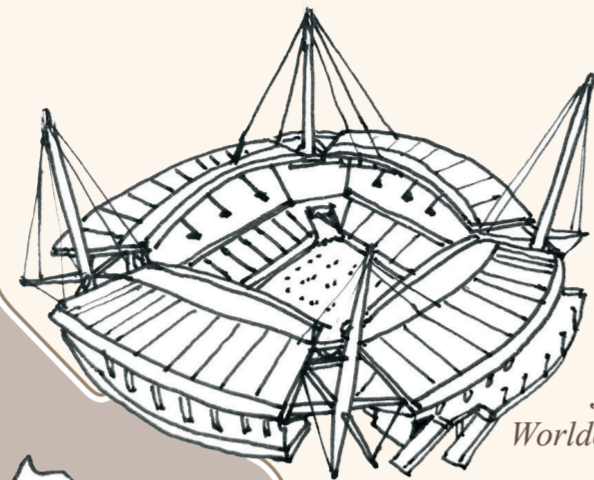
Daesaseubnori



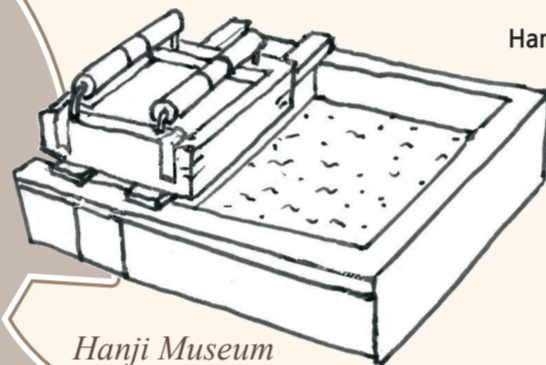
Bibimbap



Pungnammun Gate



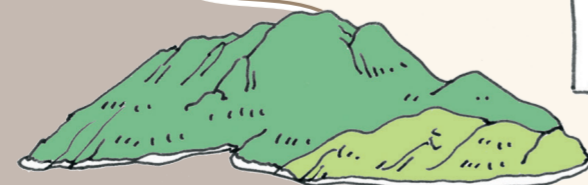
Worldcup Stadium  
Jeonju Worldcup Stadium



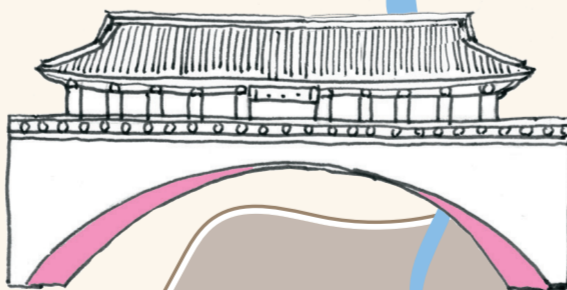
Hanji Museum



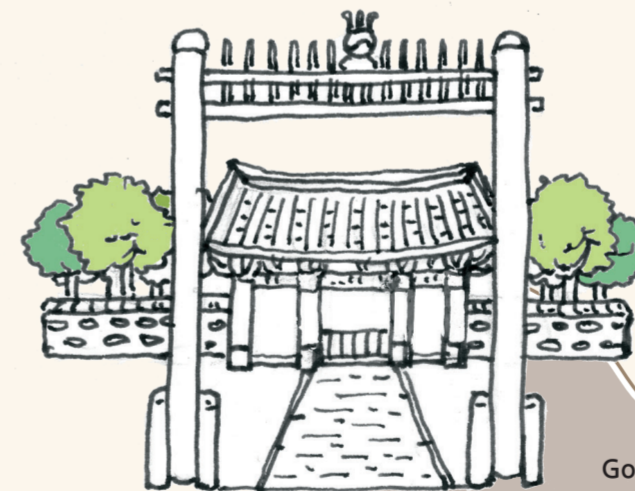
Hanbyeokdang Pavilion



Moaksan



Cheongyeonlu



Gyeonggijeon



Pungpaegijwan

- Gyeonggijeon
- Hanok Village
- Hyanggyo
- Cheongyeonlu

Pungnammun  
Jeondong Church

JEONJU  
● Pungpaegijwan

Deokjin Park



Hanji Museum

Geonjisan

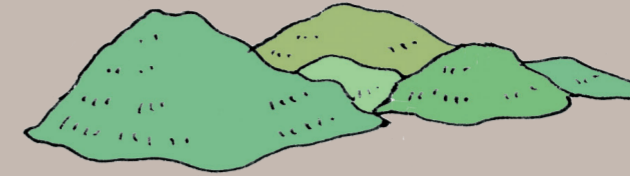


Jeonju Station

Baekseokji



Baekseokji



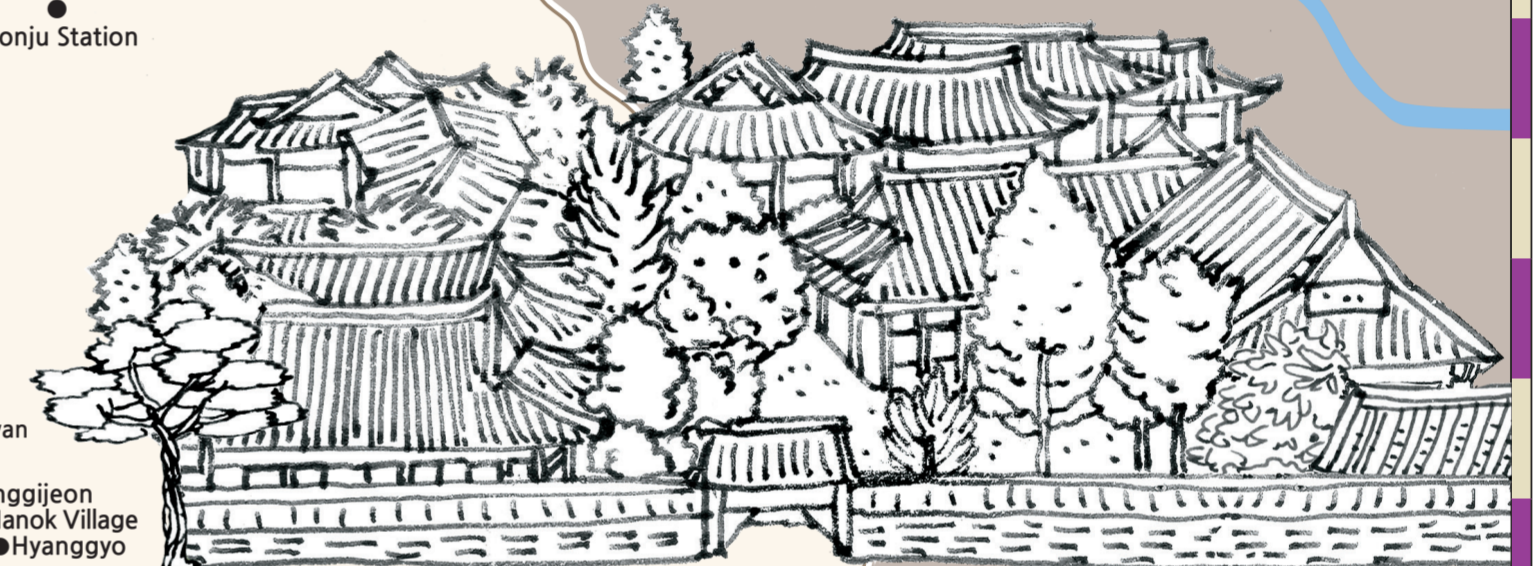
Jeonju Hyanggyo



Jeonju Station



Deokjin Park



Jeonju Hanok Village

Donggosanseong



Donggosanseong Fortress



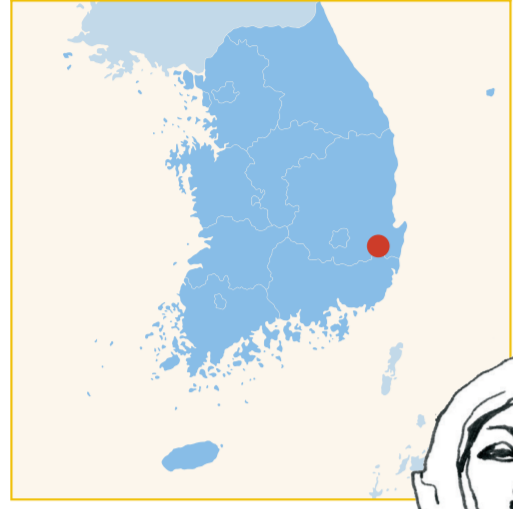
Godeoksan



Jeondong Catholic Church

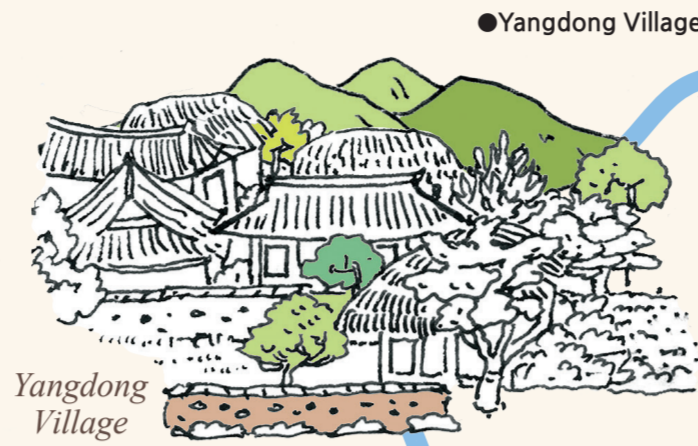
# GYEONGJU

KOREA



Gyeongju bread

Sun Tree Groves



Yangdong Village

Yangdong Village



Daereungwon Ancient Tombs



Wongok Seowon



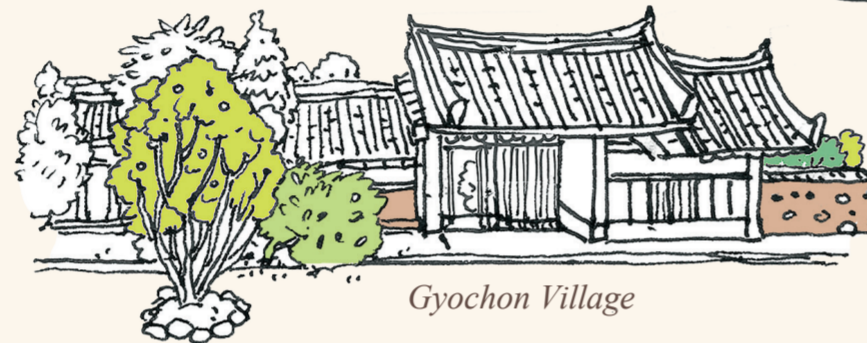
Wongok Seowon



Mae Samjonbul



Gyeongju Nat'l Museum



Gyochon Village

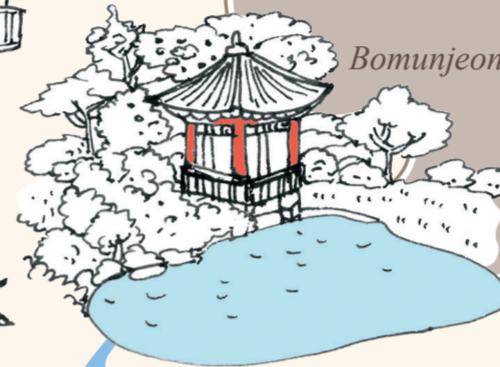
GYEONGJU

- Cheonmachong
- Daereungwon
- Hwangnyongsa
- Cheomseongdae
- Gyochon
- Gyeongju Museum

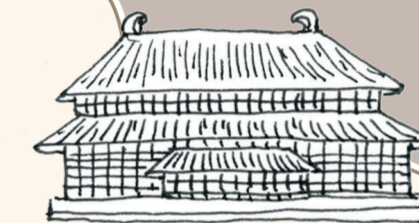


Bomun Lake Botanical Garden

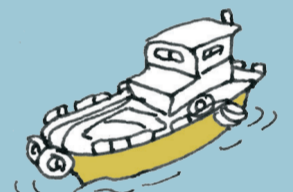
Bomunjeong



Bomunjeong



Donggung Botanical Garden



Gampo



Three-story Stone Pagoda of Hwangboksa



Bunhwangsa Mojeon Stone Pagoda



Jeonghyesa Stone Pagoda



Bell of King Seongdeok

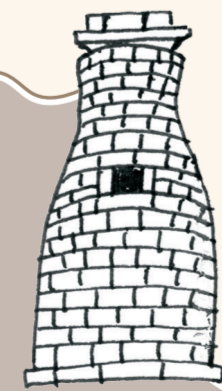


Seokgatap



Dabotap

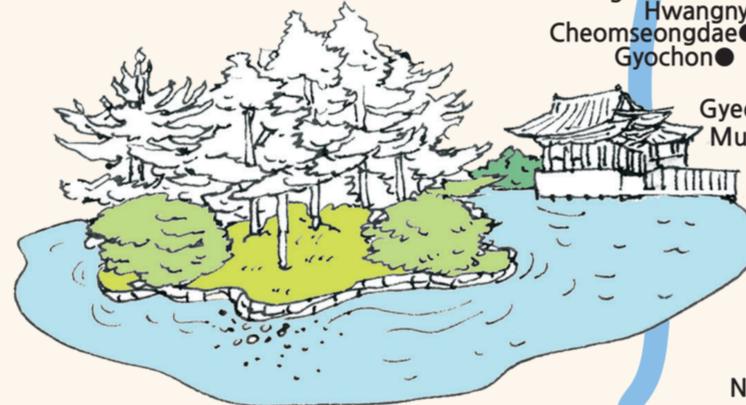
Three-story Stone Pagoda of Gameunsa Temple Site



Cheomseongdae



Seokguram Grotto



Donggung and Wolji

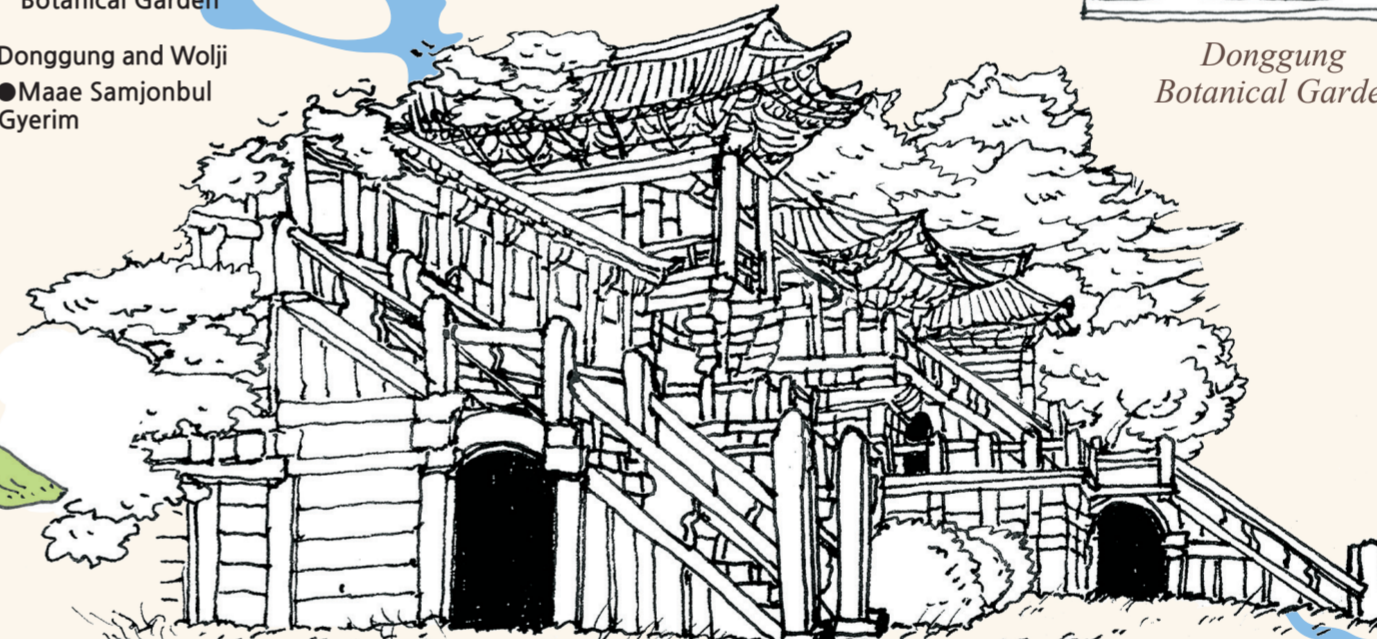


Poseokjeong

Poseokjeong



Namsan



Bulguksa



Gyelim Forest



Jusangjeolli



Tomb of King Munmu

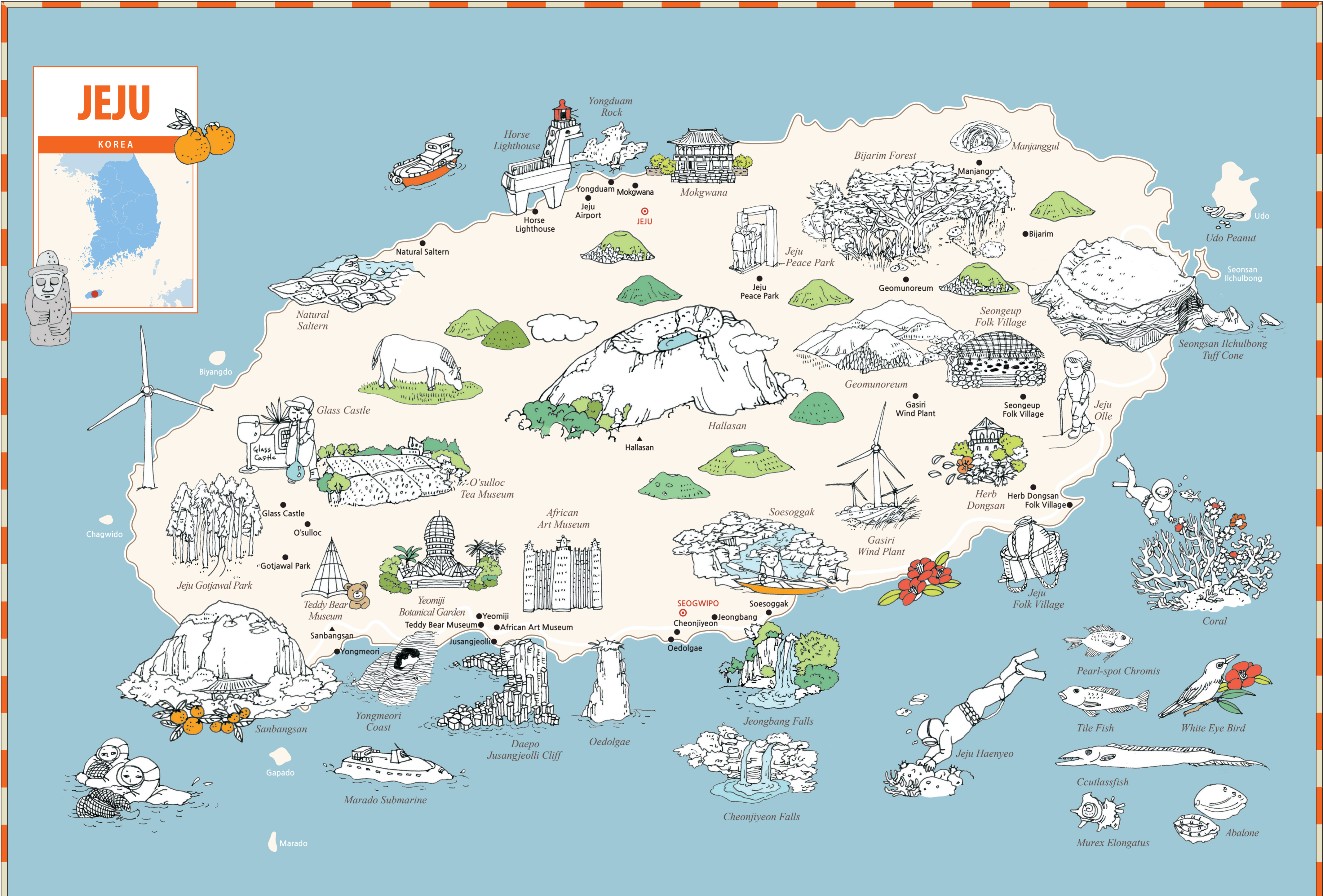
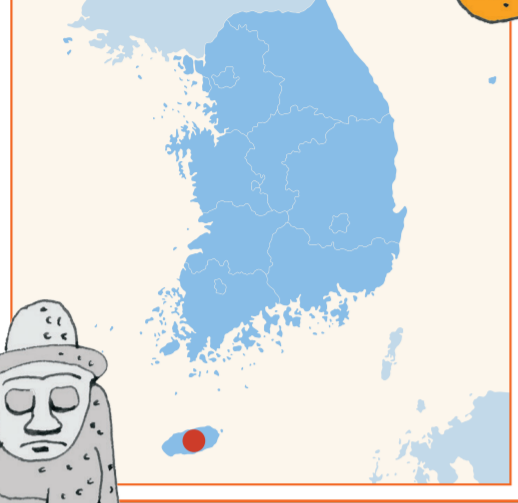
Tomb of King Munmu



Gyeongju Jusangjeolli

# JEJU

KOREA











## A

Amnokgang	162 B2
Anak	164 B1
Anbyeon	164 C1
Andong	164 C2
Andongho	164 C2
Anju	164 B1
Anjwado	166 B2
Anmado	166 B2
Anmagundo	166 B2
Anmyeondo	164 B2
Ansan	164 B2
Anseong	164 C2
Anyang	164 B2
Anyongbok Seamount	164 D1
Asan	164 C2
Asanho	164 B2
Asanman	164 B2

## B

Baecheon	164 B1
Baegado	164 B2
Baegam	162 C2
Baegamsan	164 D2
Baekdusan	162 C2
Baekhwasan	166 C1
Baeksan	162 C3
Baekyeoksan	164 C1
Baengnyeongdo	164 A2
Bakcheon	162 B3
Barwangsang	164 C2
Beopdong	164 C1
Bidanseom	162 A3
Bigeumdo	166 B2
Birobong	162 B2
Bocheon	162 C2
Boeun	164 C2
Bogildo	166 B2
Bohyeonsan	166 C1
Bonghwa	164 C2
Bonghwangsang	164 C1
Bongsan	164 B1
Boryeong	164 B2
Boseong	166 C2
Buan	166 B2
Bucheon	164 B2
Buieollyeongsan	162 C2
Buieollyeongsanmaek	162 C2
Bujeon	162 C2
Bujeongang	162 C2
Bujeonho	162 C2
Bukchang	164 B1
Bukcheong	162 C2
Bukdaebong	164 B1
Bukdaecheon	162 C2
Bukdongsan	162 B2
Bukhangang	164 C2
Bukhansan	164 B2
Bukhansan National Park	164 B2
Bukpotaesan	162 C2
Buryeong	162 D1
Busan	166 D2
Buyeo	166 B1
Byeokdong	162 B2
Byeokseong	164 B1
Byeonsanbando National Park	166 B2

## C

Changdo	164 C1
Changnyeong	166 C2
Changseondo	166 C2
Changseong	162 B2
Changwon	166 C2
Charyeongsanmaek	164 C2
Cheolsan	162 A3
Cheonan	164 C2
Cheongcheongang	162 B2
Cheongdan	164 B2
Cheongdo	166 C2
Cheongdudo	164 B2
Cheongjin	162 D2
Cheongju	164 C2
Cheongju International Airport	164 C2
Cheongpyeongho	164 C2
Cheongsando	166 B2
Cheongsong	164 D2
Cheongyang	164 B2
Cheonji	162 C2
Cheonllhna(Gangseon)	164 B1
Cheonma	162 B2
Cheonmasan	162 B2

Cheonnae	164 C1
Cheorwon	164 B1, 164 C1
Chiaksan	164 C2
Chiaksan National Park	164 C2
Chilbosan	162 D2
Chilgok	166 C1
Chodo	164 A1
Chodoman	164 A1
Chosan	162 B2
Chugalyeong	164 C1
Chugaryeonggujogok	164 C1
Chujado	166 B3
Chujiagundo	166 B3
Chuncheon	164 C2
Chungcheongbuk-do	164 C2
Chungcheongnam-do	164 B2
Chungju	164 C2
Chungjuho	164 C2

## D

Dadohaehaesang National Park	166 B2
Daean	164 B1
Daechengdo	164 A2
Daechongho	164 C2
Daedong	164 B1
Daedonggang	164 B1
Daedongman	164 A1
Daedunsan	166 C1
Daegaksan	164 B1
Daegu	166 C2
Daegu International Airport	166 C2
Daegwallyeong	164 C2
Daegwan	162 B2
Daehuksando	166 B2
Daehung	162 B2
Daehungsan	162 B2
Daehongdan	162 C2
Daehwado	164 C2
Daejeon	164 C2
Daeryeonggang	162 B2
Dalseong	166 C2
Damyang	166 B2
Dancheon	162 C2
Dangjin	164 B2
Danyang	164 C2
Demilitarized Zone(DMZ)	164 C1
Deokcheon	162 B3
Deokjeokdo	164 B2
Deokjeokgundo	164 B2
Deokseong	162 C2
Deokyeusan	166 C2
Deokyeusan National Park	166 C2
Deungnyangman	166 C2
Dochodo	166 B2
Dokdo	164 D1
Dolsando	166 C2
Dongchang	162 B2
Dongdo	164 D1
Dongducheon	164 C2
Donggong	164 C2
Donghae	164 D2
Donghae Canyon	164 D2
Donghanman	164 C1
Dongnim	162 A3
Dongsangot	164 B2
Dongsin	162 B2
Dumgangang	162 D1
Duryusan	164 C1
Dutasan	164 D2

## E

Eonjinsan	164 B1
Eonjinsanmaek	164 B1
Eorang	162 D2
Eumseong	164 C2
Euncheon	164 B1
Eundeok(Gyeongheung)	162 D1
Eungbongsan	164 D2
Eunpa	164 B1
Eunpano	164 B1
Eunsan	164 B1
Eunyuul	164 B1

## G

Gadeokhaejoe Tunnel	166 C2
Gado	164 A1
Gaecheon	164 B1
Gaedo	166 C2
Gaemagwon	162 C2
Gaepung	164 B2

Gaeseong	164 B1
Gagecho Ocean Research Station	166 A3
Gageodo	166 B2
Gallsan	166 C2
Galmaegi Reef	164 A2
Gangdong	164 B1
Ganggye	162 B2
Ganghwa	164 B2
Ganghwado	164 B2
Gangjin	166 B2
Gangnam	164 B1
Gangnamsanmaek	162 B2
Gangneung	164 B1
Gangneung Canyon	164 D2
Gangneung	164 B2
Gangseo	164 B1
Gangwon Plateau	164 D1
Gangwon-do	164 C2
Gapado	166 B3
Gapsan	162 C2
Gapyeong	164 C2
Gariwangsan	164 C2
Gaudio	164 B2
Gayasan	166 C2
Gayasan National Park	166 C2
Geobukseon Daegyo	166 C2
Geochagundo	166 B2
Geochang	166 C2
Geoga Daegyo	166 C2
Geogeumdo	166 C2
Geoje	166 C2
Geojedo	166 C2
Geomdeoksan	162 C2
Geomundo	166 C2
Geumcheon	164 B1
Geumdangdo	166 C2
Geumgang	164 C1, 166 B1
Geumgangsang	164 C1
Geumhogang	166 C2
Geumdo	166 C2
Geumsan	166 C1
Geumseongho	162 B3
Geumya	164 C1
Gijang	166 D2
Gilju	162 D2
Gimcheon	166 C1
Gimhae International Airport	166 C2
Gimhae	166 C2
Gimhwa	164 C1
Gimje	166 B2
Gimpo	164 B2
Gimpo International Airport	164 B2
Gildaebong	162 D1
Goesan	164 C2
Gogunsanyeoldo	166 B2
Goheung	166 C2
Goksan	164 B1
Gokseong	166 C2
Gopung	162 B2
Goryeong	166 C2
Gosan	164 C1
Goseong	164 C1, 166 C2
Goseongsan	162 D2
Gowon	164 C1
Goyang	164 B2
Goyeondusan	162 D1
Guamho	164 B1
Guijang	162 B3
Gumi	166 C1
Gunpo	164 B2
Gunsan	166 B2
Gunsan Airport	166 B2
Gunwi	166 C1
Gureopdo	164 B2
Guri	164 C2
Gurye	166 C2
Guseong	162 B3
Gwail	164 B1
Gwaksan	162 B3
Gwangju	166 B2
Gwangju Airport	166 B2
Gwangjusanmaek	164 C1
Gwangmyeong	164 B2
Gwangyang	166 C2
Gwangyangman	164 B1, 166 C2
Gwaoson	164 B2
Gwesangbong	162 D2
Gyehwado Reclaimed Land	166 B2
Gyeokryeolbiyeoldo	164 B2
Gyeongbu High Speed Railway	166 C1
Gyeonggi-do	164 B2
Gyeonggiman	164 B2
Gyeongju	166 D2
Gyeongju National Park	166 D2
Gyeongsan	162 C2
Gyeongsangbuk-do	164 C2

Gyeongsangnam-do	166 C2
Gyeongseong	162 D2
Gyeongseongman	162 D2
Gyeryong	166 C1
Gyeryongsan	166 C1
Gyeryongsan National Park	166 C1
Gyodongdo	164 B2

## H

Hadong	166 C2
Haeju	164 B1
Haenam	166 B2
Hajodo	166 B2
Hallasan	166 B3
Hallasan National Park	166 B3
Hallyeohaesang National Park	166 C2
Haman	166 B3
Hamgyeongbuk-do	162 D2
Hamgyeongnam-do	162 C2
Hamgyeongsanmaek	162 D1
Hamheung	162 C3
Hamheungman	162 C3
Hamyang	162 C3
Hampyeong	166 B2
Hamyang	166 C2
Hanam	164 C2
Hangang	164 B2
Hangryeong	164 C1
Hansando	166 C2
Hapcheon	166 C2
Hapcheonho	166 C2
Hataedo	166 B2
Heocheon	162 C2
Heocheonang	166 C2
Heuksangundo	166 B2
Heuksanjedo	166 B2
Hodobando	164 C1
Heungdeok	164 B1
Hoengseong	164 C2
Hoengseongho	164 C2
Hoeryeong	162 D1
Hoeyang	164 C1
Homigot	166 D1
Honam High Speed Railway	166 B2
Honam Pyeongya	166 B2
Hongcheon	164 C2
Hongcheongang	164 C2
Hongdo	166 B2
Hongseong	164 B2
Hongwon	162 C2
Huchang(Gimhyeongjik)	162 C2
Huicheon	162 B2
Hupo Bank	164 D2
Hwaaksan	164 C1
Hwacheon	164 C1
Hwadae	162 D2
Hwanghaenam-do	164 B1
Hwangju	164 B1
Hwangnyongsan	164 C1
Hwangho	164 B2
Hwapyeong	162 B2
Hwaseong	164 B2
Hwaseong(Myeonggan)	162 D2
Hwasun	166 B2
Hwanghaebuk-do	164 B1
Hyangsan	162 B3
Hyeongsangang	166 D2
Hyesan	162 C2

## I

Icheon	164 B1
leodo Ocean Research Station	166 A3
Igyuwon Ridge	164 D2
Iksan	166 B2
Imhaho	164 C2
Imjado	166 B2
Imjingang	164 C1
Imsil	166 C1
Incheon	164 B2
Incheon Daegyo	164 B2
Incheon International Airport	164 B2
Inje	164 C1
Insan	164 B1
Irwolsan	164 D2
Iwon	162 C2

## J

Jaeryeong	164 B1
Jaundo	166 B2
Jagang-do	162 B2

Jangbongdo	164 B2
Janggang	162 B2
JangHeung	166 B2
Jangjagangho	166 C2
Jangjin	162 C2
Jangjigang	162 C2
Jangjinho	164 B1
Jangpung	166 C2
Jangsangot	164 A1
Jangseong	166 B2
Jangsu	166 C2
Jangyeon	164 B1
Jaseong	162 B2
Jawoldl	164 B2
Jecheon	164 C2
Jeju	166 B3
Jeju International Airport	166 B3
Jeju Special Self-Governing Province	166 B3
JEJU STRAIT	166 B3
Jeju Vally	166 C3
Jejudo	166 B3
Jeokuryeongsanmaek	162 B2
Jeolla Sand Ridge Province	166 B2
Jeollabuk-do	166 C2
Jeollanam-do	166 B2
Jeoncheon	162 B2
Jeongeup	166 B2
Jeongju	164 B1
Jeongpyeong	162 C3
Jeongseon	164 C2
Jeonju	166 C2
Jeungdo	166 B2
Jeungpyeong	164 C2
Jeungsan	164 B1
Jido	166 B2
Jinan	166 C2
Jincheon	164 C2
Jindo	166 B2
Jinhaeman	166 C2
Jinju	166 C2
Jinyangho	166 C2
Jirisan	166 C2
Jirisan National Park	166 C2
Josanman	162 D1
Juamho	166 C2
Junggang	162 B2
Pangyo	164 C1
Paro	164 C1
Pihvon	162 A2
Pocheon	164 C2
Pohang	166 D1
Pohang Airport	166 D2
Pungsan(Gimhyeonggwon)	166 C2
Pungseo	162 C2
Pungseoho	162 C2
Pyeongangbuk-do	162 B2
Pyeongannam-do	164 B1
Pyeongchang	164 C2
Pyeongchang	164 C1
Pyeonggido	166 C2
Pyeongsan	164 B1
Pyeongseong	164 B1
Pyeongtaek	164 C2
Pyeongwon	164 B1
Pyeongwon	164 B1
Pyeongyong	164 B1
Pyongyang Sunan International Airport	164 B1

## K

Kiminu Seamount	164 D2
Korea Bay	164 A1
Korea Plateau	164 D1
Korea Strait	166 C3

## M

Macheollyeongsanmaek	162 C2
Maenggoldo	166 B2
Maengsan	164 B1
Manisan	164 B2
Manjaedo	166 B2
Manpo	162 B2
Manpungho	162 A2
Marado	166 B3
Masingnyeongsanmaek	164 B1
Mayangdo	162 C3
Mireukdo	166 C2
Miryang	166 C2
Mokpo	166 B2
Muan	166 B2
Muan International Airport	166 B2
Mudeungsan	166 C2
Mudeungsan National Park	166 C2
Muju	166 C1
Muncheon	164 C1
Mundeok	164 B1
Mungapdo	164 B2
Mungyeong	164 C2
Munsusan	162 A3
Musan	162 D1
Muuido	164 B2
Myeongcheon	162 D2
Myeoraksan	164 B1
Myeoraksanmaek	164 B1
Myodo Daegyo	166 C2
Myohyangsanmaek	162 B3

## N

Naejangdo	164 B1
-----------	--------

Naejangsan	166 B2
Naejangsan National Park	166 B2
Naepo Pyeongya	166 B1
Naenarodo	166 C2
Naju	166 B2
Naju Pyeongya	166 B2
Nakanbong	164 B1
Nakdonggang	164 C2, 166 C2
Namdaecheon	162 C2
Namdeogyusan	166 C2
Namgang	166 C2
Namhae	166 C2
Namhaedo	166 C2
Namhangang	164 C2
Nampo	164 B1
Namwon	166 C2
Namyangju	164 C2
Namyangman	164 B2
Nangnim	162 C2
Nangnimho	162 C2
Nangninsanmaek	162 C2
Naseon(Najin)	162 D1
Nohwado	1



# PHOTO SOURCES

## 9 Page

Photographs showing the physical Prime Meridian at the Greenwich Observatory: Chu, Gregory H.

## 27 Page

All Photographs: Chu, Gregory H.

## 28 Page

Spring: An, Donglib

Summer: An, Donglib

Autumn: Dokdo Control Office

Winter: Dokdo Control Office

Panorama of Dokdo: Dokdo Control Office

## 29 Page

Dokdo seen from Ulleungdo: Dokdo Research Institute

This stone post indicates Dokdo as the easternmost point of Korea: An, Donglib

SCAPIN-677: Kim, Young-Hoon

The mark to show that Dokdo is Korean Terror: Dokdo Control Office

The stone post of the territory of the Republic of Korea: An, Donglib

Dokdo and Taeseukgi: Dokdo Control Office

## 32 Page

Daehanmun Gate at Deoksugung Palace of the Joseon Dynasty (1394-1897): Chu, Gregory H.

Gwanghwamun Gate at Gyeongbokgung Palace of the Joseon Dynasty (1394-1897): Chu, Gregory H.

## 33 Page

All Photographs: Chu, Gregory H.

## 35 Page

Two unique physical features on Jeju Island: Sanbansan (left) and Seongsan Ilchubong Tuff Cone (right): Jeju Self-Governing Province, World Heritage and Mt. Hallasan Research Institute

## 41 Page

Landscape of the Gaeseong Industrial Complex: Ministry of Unification

## 45 Page

Erosional Basin: National Institute of Environmental Research

Tafoni: National Institute of Environmental Research

Dome: National Institute of Environmental Research

Block Field: National Institute of Environmental Research

## 46 Page

Entrenched Meander: National Institute of Environmental Research

Riverine Wetland: National Institute of Environmental Research

Waterfall: National Institute of Environmental Research

Riverside Cliff: National Institute of Environmental Research

## 47 Page

Tideland: National Institute of Environmental Research

Sea Stack: National Institute of Environmental Research

Coastal Sand Dune: National Institute of Environmental Research

## 54 Page

River Maintenance Project: Natural Archives of Korea

Before the Cheonggyecheon Restoration Project: Yonhap News Agency

After the Cheonggyecheon Restoration Project: Yonhap News Agency

River Restoration Projects: Incheon-si

## 67 Page

Before Afforestation: Korea Forest Service

Erosion Control Before Afforestation: Korea Forest Service

After Afforestation: Korea Forest Service

## 68 Page

A bullet train arriving Busan Station from Seoul: Chu, Gregory H.

## 71 Page

This long and winding building in Sejong houses many of the government ministries: Multifunctional Administrative City Construction Agency

## 72 Page

1960s - Fertilizer Plant: Yonhap News Agency

1970s - Gyeongbu Expressway: Yonhap News Agency

1980s - Gangnam Main Street: Yonhap News Agency

1990s - Bundang Apartment Complex: Yonhap News Agency

2000s - High-speed Railroad: Yonhap News Agency

1960s - Guro Export Industry Complex: Yonhap News Agency

1970s - Shipyard: Yonhap News Agency

1980s - Seoul Olympic: Yonhap News Agency

1990s - Seohaedaegyo Bridge: Yonhap News Agency

2000s - Aerogenerator in Baekdudaegan Mountain Range: Yonhap News Agency

## 78 Page

Ilsan: Korea Land & Housing Corporation

Bundang: Korea Land & Housing Corporation

Jungdong: Korea Land & Housing Corporation

Pangyo: Korea Land & Housing Corporation

Gimpo Hangang: Korea Land & Housing Corporation

Dongtan 1: Korea Land & Housing Corporation

## 79 Page

Rooftop garden adorns the government office complex in Sejong: Chu, Gregory H.

Pyeongchon: Korea Land & Housing Corporation

Sanbon: Korea Land & Housing Corporation

Paju Unjeong: Korea Land & Housing Corporation

Wirye: Korea Land & Housing Corporation

## 84 Page

Samsung D'light: Chu, Gregory H.

## 86 Page

The Hyundai automobile assembly plant and office building in Ulsan: Chu, Gregory H.

A large number of cars wait to be loaded: Chu, Gregory H.

## 89 Page

A wind farm on Jeju Island: Chu, Gregory H.

## 103 Page

All Photographs: Chu, Gregory H.

## 105 Page

All Photographs: Chu, Gregory H.

## 111 Page

Family in Korean Traditional Clothes: Fotolia  
Korean Food: Jeonju-si

Gyeongbokgung in the Evening: Cultural Heritage Administration

National Museum of Korea in the Evening: National Museum of Korea

Opera House in Seoul Art Center: Seoul Art Center

An outdoor event performer poses in traditional Korean costume with a typical Korean drum: Chu, Gregory H.

## 112 Page

All Photographs: Chu, Gregory H.

## 113 Page

All Photographs: Chu, Gregory H.

## 114 Page

All Photographs: Chu, Gregory H.

## 115 Page

All Photographs: Chu, Gregory H.

## 118 Page

Tanggeonbong: An, Donglib

Samhyeongjegul Bawi: An, Donglib

Hanbando Bawi: Dokdo Control Office

Dak Bawi: An, Donglib

Kokkiri Bawi: An, Donglib

Buchae Bawi: An, Donglib

Dongnimmun Bawi: An, Donglib

## 119 Page

Lischke's Top Shell: Daegu Regional Environmental Office, Ministry of Environment

Ostoc: Daegu Regional Environmental Office, Ministry of Environment

Purple Sea Urchin: Daegu Regional Environmental Office, Ministry of Environment

Green Alga: Daegu Regional Environmental Office, Ministry of Environment

Top Shell: Daegu Regional Environmental Office, Ministry of Environment

Link Confertii: Daegu Regional Environmental Office, Ministry of Environment

Arctic Daisy: An, Donglib

Morrow's Honeysuckle: Daegu Regional Environmental Office, Ministry of Environment

Spindle Tree: Daegu Regional Environmental Office, Ministry of Environment

New Zealand Spinach: Daegu Regional Environmental Office, Ministry of Environment

Wood Sorrel: Daegu Regional Environmental Office, Ministry of

Environment

Wood Pigeon: Daegu Regional Environmental Office, Ministry of Environment

Siberian Rubythroat: Daegu Regional Environmental Office, Ministry of Environment

Stormy Petrel: An, Donglib

Black-tailed Gull: An, Donglib

## 120 Page

Food Made with Acorns: Korearoot, Inc.

## 121 Page

Traditional Ecological Practices: Korearoot, Inc.

Mulgeon-ri Forest: Park, Chan-Ryul

Songmal Forest: Park, Chan-Ryul

## 122 Page

Geomorphological Feature Survey: Lee, Jaeho

Vegetation Survey: Song, Sekyu

Fauna and Flora Survey: Jang, Hoan-Jin

## 126 Page

1 Gangwon-do Peace Belt National Geopark: Korea National Park Service

2 Ulleungdo-Dokdo National Geopark: Korea National Park Service

3 Mudeungsan Area National Geopark: Korea National Park Service

4 Cheongsong National Geopark: Korea National Park Service

5 Busan National Geopark: Korea National Park Service

6 Jeju Special Self-Governing Province National Geopark: Korea National Park Service

7 Hantan-Imjingang River National Geopark: Kim, Won Seob

## 127 Page

Changnyeong Upo Wetland: Chu, Gregory H.

Rare plants are found in the Changnyeong Upo Wetland: Chu, Gregory H.

## 132 Page

The completed Najido Landfill #1 in the process of being turned into the Haneul Park. Notice the height of the landfill by comparing to the buildings in the forefront of this photograph: World Cup Park, Seoul Metropolitan

Soil covering at the Metropolitan Landfill site. The poles are built to capture methane gas for use in generating electricity: Korea JoongAng Daily

## 133 Page

Panoramic View of Noeul Park: World Cup Park, Seoul Metropolitan

Panoramic View of Haneul Park: World Cup Park, Seoul Metropolitan

Panoramic View of Public Golf Course: Kyeong-Gi News

Panoramic View of Bio-Green Complex: Kyeong-Gi News

## 137 Page

Occurrence of Red Tide: Korea Ocean Satellite Center

Occurrence of Green Tide: Korea Ocean Satellite Center

## 146 Page

Changeokgung: Cultural Heritage Administration

Jongmyo: Kwon, Tae Gyun

Hwaseong Fortress: Kwon, Tae Gyun

Namhansanseong: Kwon, Tae Gyun

Seokguram Grotto and Bulguksa Temple: Kwon, Tae Gyun

Historic Villages of Korea (Haheo): Kwon, Tae Gyun

Historic Villages of Korea (Yangdong):

Historic Monuments and Sites in Gaeseong: Rii Hae Un

Complex of Goguryeo Tombs: Roger Shepherd

Geomunoreum Lave Tube System: Yonhap News Agency

Hallasan Natural Reserve: Yonhap News Agency

Seongsan Ilchubong Tuff Cone: Yonhap News Agency

## 147 Page

The Gochang, Hwasun, and Ganghwa Dolmen Sites: Kwon, Tae Gyun

The Royal Tombs of the Joseon Dynasty: Kwon, Tae Gyun

Haeinsa Temple Janggyeong Panjeon: Kwon, Tae Gyun

Daeganggyeong in the Haeinsa Temple: Kwon, Tae Gyun

The Gyeongju Historic Areas: Cultural Heritage Administration

Jongmyo Jerye and Jongmyo Jeryeak: Kwon, Tae Gyun

Gangneung Danoje Festival: Cultural Heritage Administration

Pansori Epic Chant: "

Human Rights Documentary Heritage 1980 Archives for the May 18th Democratic Uprising against Military Regime, in Gwangju: Cultural Heritage Administration

Gagok: Cultural Heritage Administration

Ganggangsullae Circle Dance: Cultural Heritage Administration

Taekkyeon: Cultural Heritage Administration

## *The National Atlas of Korea: Comprehensive Edition*

Date of Printing December 2017

Date of Publication December 2017

Publisher Choe, Byong-Nam

National Geographic Information Institute (NGII)

Ministry of Land, Infrastructure and Transport

Address 92 Worldcup-ro,

Yeongtong-gu, Suwon-si,

Gyeonggi-do 16517

REPUBLIC OF KOREA

Phone +82-31-210-2600

Fax +82-31-210-2644

You can access to The National Atlas of Korea at the homepage of NGII,

<http://nationalatlas.ngii.go.kr>

Copyright (c) 2017 NGII. All rights reserved.



ISBN 978-89-93841-29-9